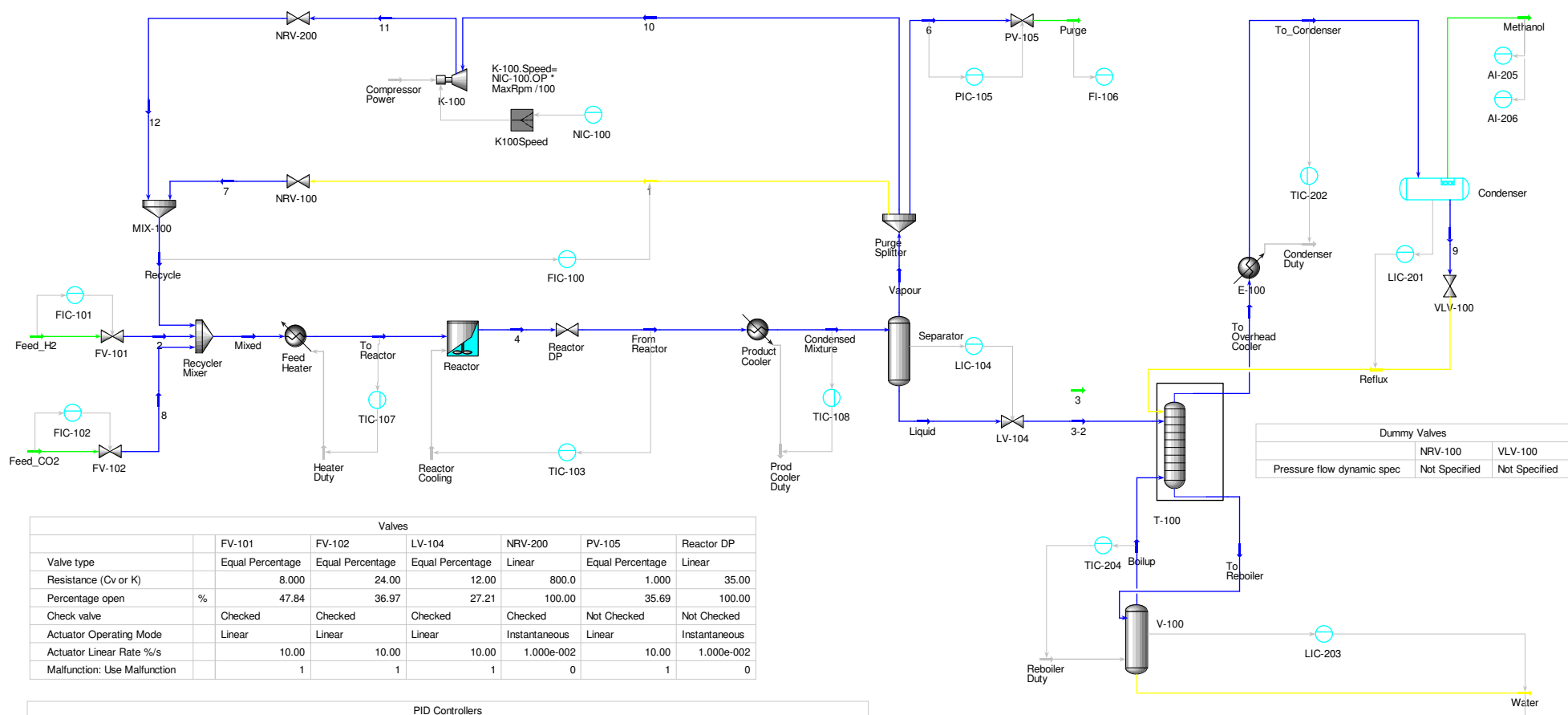


Ini



Valves						
	FV-101	FV-102	LV-104	NRV-200	PV-105	Reactor DP
Valve type	Equal Percentage	Equal Percentage	Equal Percentage	Linear	Equal Percentage	Linear
Resistance (Cv or K)	8.000	24.00	12.00	800.0	1.000	35.00
Percentage open	%	47.84	36.97	27.21	100.00	35.69
Check valve	Checked	Checked	Checked	Checked	Not Checked	Not Checked
Actuator Operating Mode	Linear	Linear	Linear	Instantaneous	Linear	Instantaneous
Actuator Linear Rate %/s	10.00	10.00	10.00	1.000e-002	10.00	1.000e-002
Malfunction: Use Malfunction	1	1	1	0	1	0

PID Controllers													
	FIC-100	FIC-101	FIC-102	LIC-104	LIC-201	LIC-203	PIC-105	TIC-103	TIC-107	TIC-108	TIC-202	TIC-204	
Control Action	Reverse	Reverse	Reverse	Direct	Direct	Direct	Direct	Direct	Reverse	Direct	Direct	Reverse	
Control Mode	Man	Auto	Auto	Auto	Auto	Auto	Auto	Auto	Auto	Auto	Auto	Auto	
SP	354.3	121.0	879.0	50.00	50.00	50.00	3797	200.0	200.0	40.00	138.4	174.4	
PV	354.3	121.0	879.0	50.00	50.04	52.11	3797	200.0	200.0	40.00	138.4	174.2	
OP	%	0.00	47.84	36.97	27.21	54.04	20.76	35.69	11.46	51.20	50.92	52.98	58.24
Gain		0.3000	0.1033	0.2000	1.000	1.000	0.5000	1.000	2.000	0.1000	0.1000	0.3000	1.000
Integral Time Constant	seconds	12.00	0.5221	24.00	600.0	300.0	600.0	120.0	120.0	12.00	12.00	30.00	300.0
Malfunction: Use Malfunction		1.000	1.000	1.000	1.000	1.000	1.000	1.000	1.000	1.000	1.000	1.000	1.000

Dummy Valves		
	NRV-100	VLV-100
Pressure flow dynamic spec	Not Specified	Not Specified

Measurements				
	AI-205	AI-206	AI-207	FI-106
PV	0.9806	4.919e-003	4.704e-002	2.783
Malfunction: Use Malfunction	1.000	1.000	1.000	1.000

Boundary Streams					
	Feed_CO2	Feed_H2	Methanol	Purge	
Pressure	kPa	5000	5000	1000	3700